

PRODUCT MANUAL INSTALLATION INSTRUCTIONS

AI BASED CAMERA SYSTEM



contents

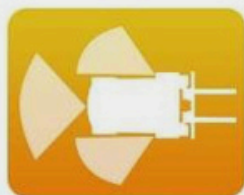
▶ Introduction	02
▶ AI Based Camera Monitor System.....	03
▶ Settable Warning Zone.....	04
▶ Detect Vehicle	05
▶ Whole Set	06
▶ Multi Channels Display.....	07
▶ HD IR Camera	08
▶ Specification	09

AI BSD CAMERA MONITOR SYSTEM

Active & Precise detection and warning



AI Technology



Blind Spot Detection



Active & Precise
Recognition



Customizable Algorithm

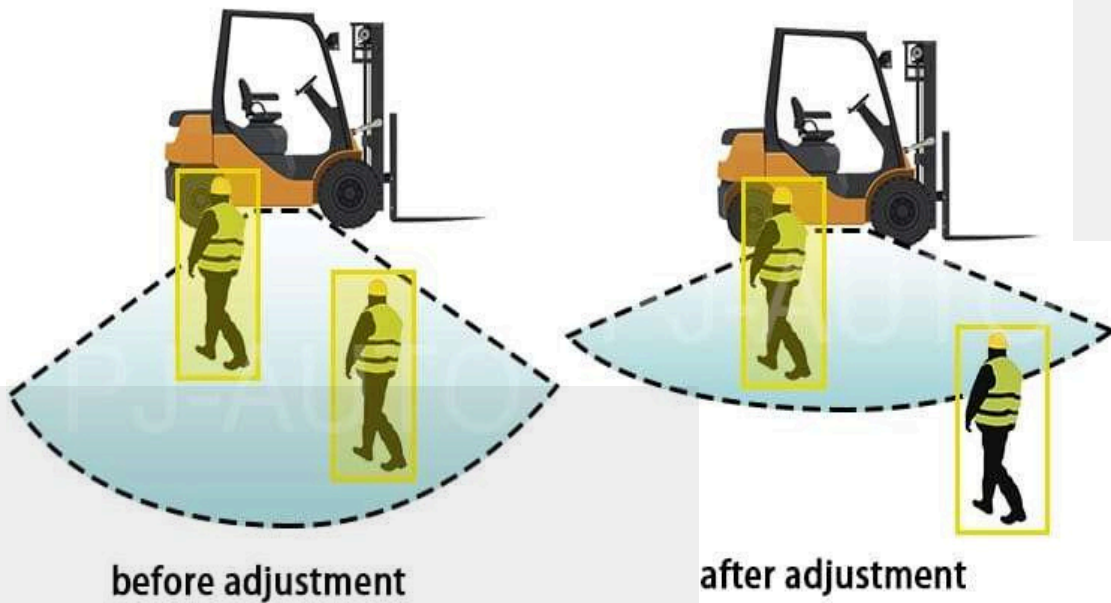
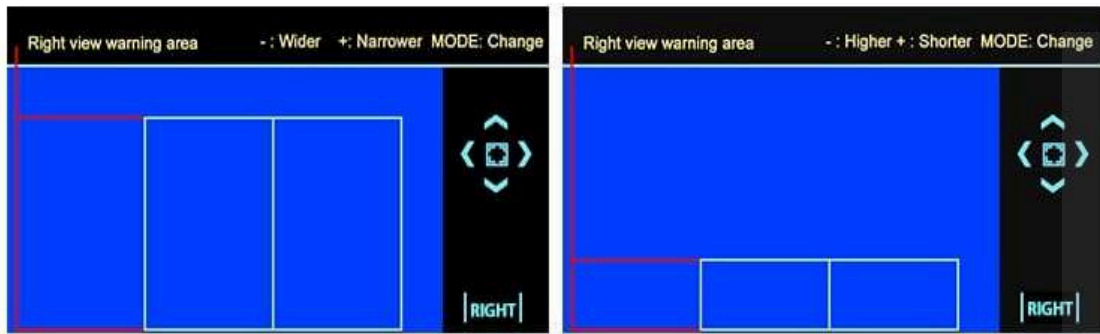


Flashing Alarm



High Definition Image

Settable Warning Zone



recognition & warning together



recognition only

CUSTOMIZABLE ALGORITHM

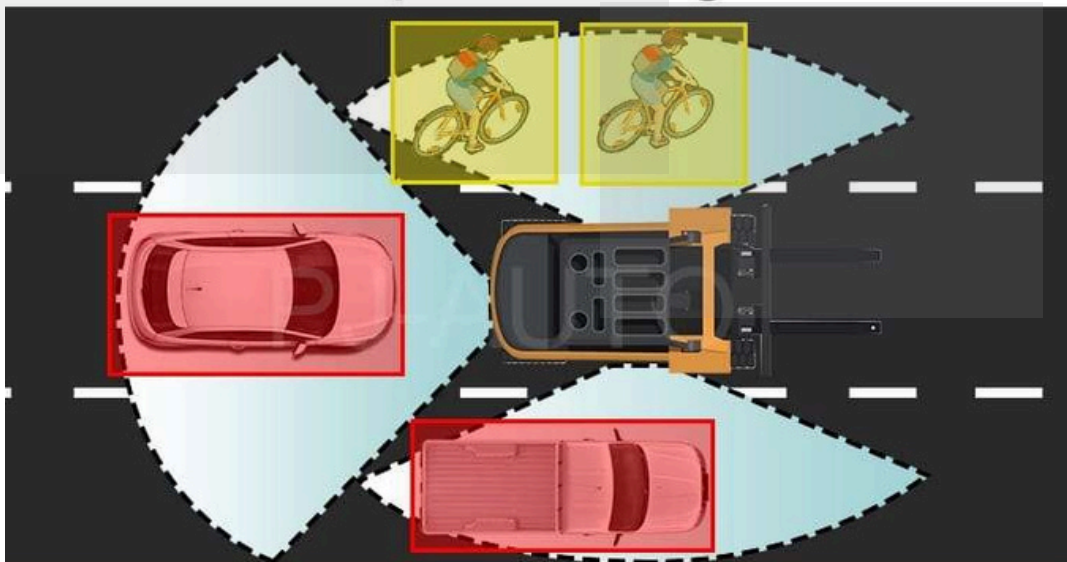
Detect pedestrian & cyclist only

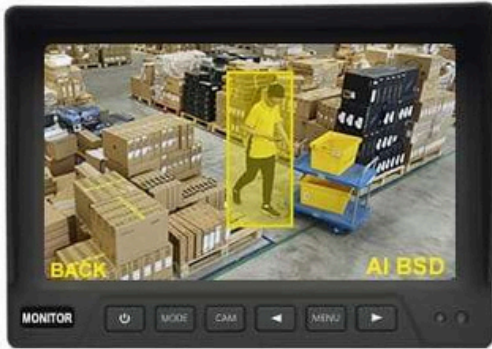


Detect vehicle only



Detect vehicle & pedestrian together

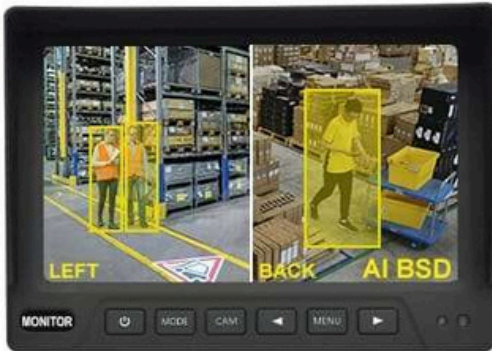




One-way display



Two-way display



Three-way option



Four-way option

Whole set



Multi-channel display



HD IR CAMERA

Clear circadian imaging, color night vision



Day Vision



Night

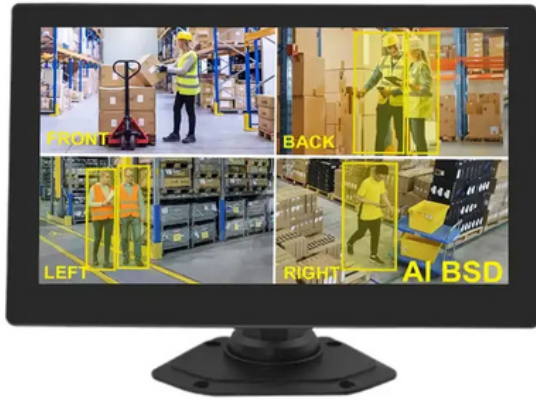
Specification:

Description	AI Active Detection 7" HD Quad-View Color monitor
Resolution	1024 x 3(RGB) x 600
Warning distance	Up to 12-meter
Maximum Number of Cameras	4
Audio input	0
Audio output (loudspeaker)	1W
Trigger	4
Max. Brightness	500 cd/m ²
Contrast	1000:1
Minimum Operating Temperature	-20°C, RH 90%
Maximum Operating Temperature	+70°C, RH 90%
Viewing Angle Monitor	U: 85°,D: 85°, R/L: 85°/85°
Mirror Function	Yes
Monitor Diameter (mm)	190mm (W) × 160mm (H) × 50mm (T)
Split Screen	Yes
Volts	12-36V
Consumption	less than 12W (without cameras)
Anti-vibration	ISO 16750-3 Max. 10G

UNIVERSAL

ELECTRICALS & ELECTRONICS

An ISO 9001:2015 Certified



Address: NO#36 Seerappa Layout, 2nd Cross, Lakshmipura Main Road, Abbigere Industrial Area, Abbigere Village, Bengaluru-560090.

Company: Universal Electrical & Electronics

Website: www.ueeindia.com

Mobile: +91 8494900615.

Email: info@ueeindia.com