

PRODUCT MANUAL INSTALLATION INSTRUCTIONS

# PROXIMITY WARNING SYSTEM



# **Product Introduction**

The Proximity Warning System (Model RPWD-UEE-SR17) is an advanced safety device designed for forklifts, warehouse vehicles, small loaders, and compact heavy vehicles. This system detects obstacles up to 12-17 meters and provides real-time visual and audio warnings to the operator to prevent accidents

It performs reliably in dust, fog, rain, and complete darkness

# Key Benefits

Blind spot protection

Easy plug-and-play installation

Low maintenance

IP65 waterproof sensor



# Technical Specifications

Parameter	Details
Operating Voltage	12V – 24V DC
Current Consumption	< 100mA
Detection Range	0.3m – 17m (configurable)
Ideal Range	12–17 meters
Sensor Type	Radar / Ultrasonic Proximity
Display	LED Digital + Color Ring Indicator (Green/Yellow/Red)
Alert	"-P-" for danger + Buzzer $\geq 80$ dB
Housing	Waterproof Black ABS (IP65/IP66)
Cable Length	2.5m (extendable)
Operating Temperature	-20°C to +70°C
Recommended Mounting Height	0.5m – 1.2m from ground

# System Components

Digital Display Unit (x1) • LED screen with color ring indicator • Shows real-time distance + "-P-" proximity alert  
Proximity Sensor (x1) • Compact black box design • Detects obstacles up to 17 meters

Adjustable Mounting Bracket (x1) • Heavy-duty metal bracket for perfect angle adjustment

Wiring Harness & Cable • 2.5m cable with connectors for easy installation  
All components are IP-rated and tested for heavy-duty industrial use.



# Self-Diagnosis

When ignition is turned ON and reverse gear is engaged, the system automatically performs self-diagnosis.

Result	Display Shows	Buzzer
Pass	888 (Green ring)	Single beep
Fail	ERROR (Red ring)	Double beep

## Distance Warning Levels

Distance Range	Display Color	Buzzer Frequency
>12 meters	Green	No sound
9–12 meters	Green	No sound
6–9 meters	Yellow	Slow intermittent beep
4–6 meters	Yellow	Medium beep
2–4 meters	Orange	Fast beep
1.26–2 meters	Red	Very fast beep
≤1.25 meters	Red + "-P-"	Continuous beep

# Installation Instructions – Part 1

Mounting the Display Unit • Make a 60mm × 60mm square cutout on the dashboard. • Insert the display unit and secure it with 4 screws.

Mounting the Sensor • Mount the sensor on rear/front bumper using the provided bracket. • Adjust sensor height to 0.5–1.2 meters from ground. • Ensure sensor faces straight direction and is clean/unobstructed.

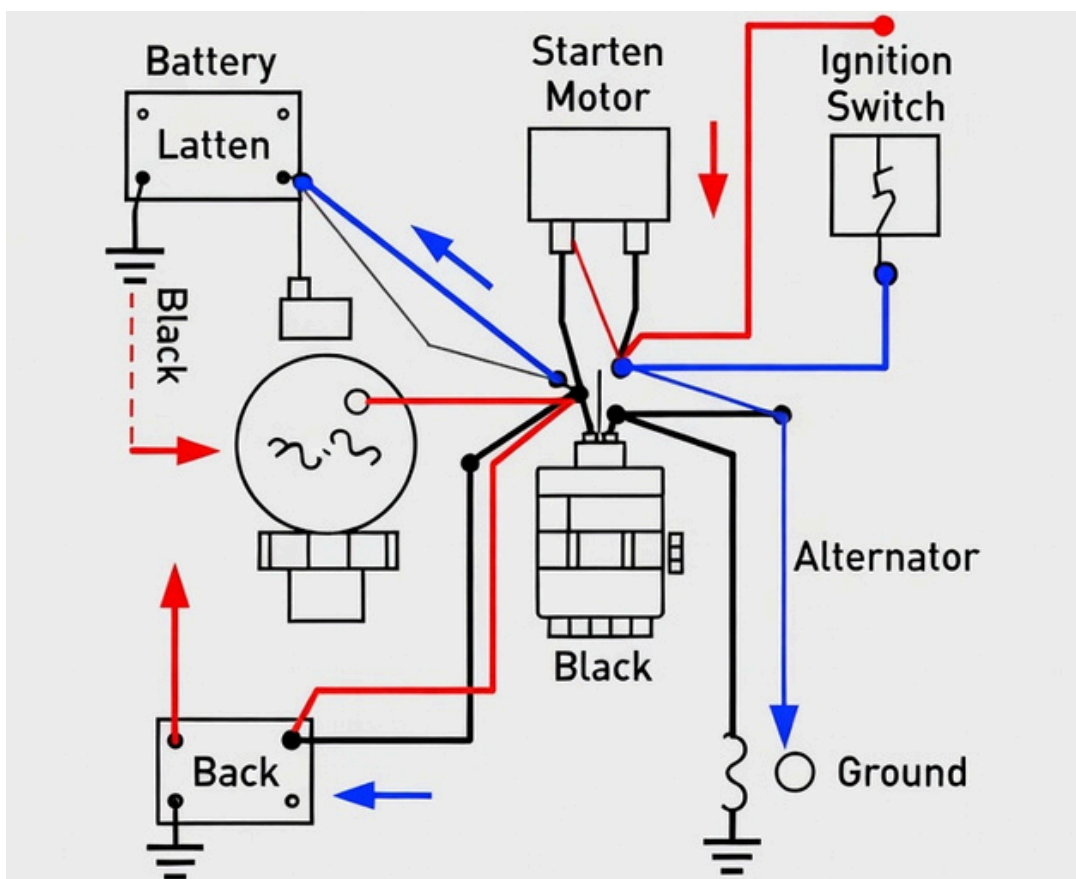


# Installation Instructions – Part 2

Wiring Connections • Red wire → Connect to 12V+ ignition supply (use fuse)  
• Black wire → Connect to chassis ground  
• Orange wire → Connect to reverse light circuit (auto activation in reverse)  
• Green wire → Optional trigger switch

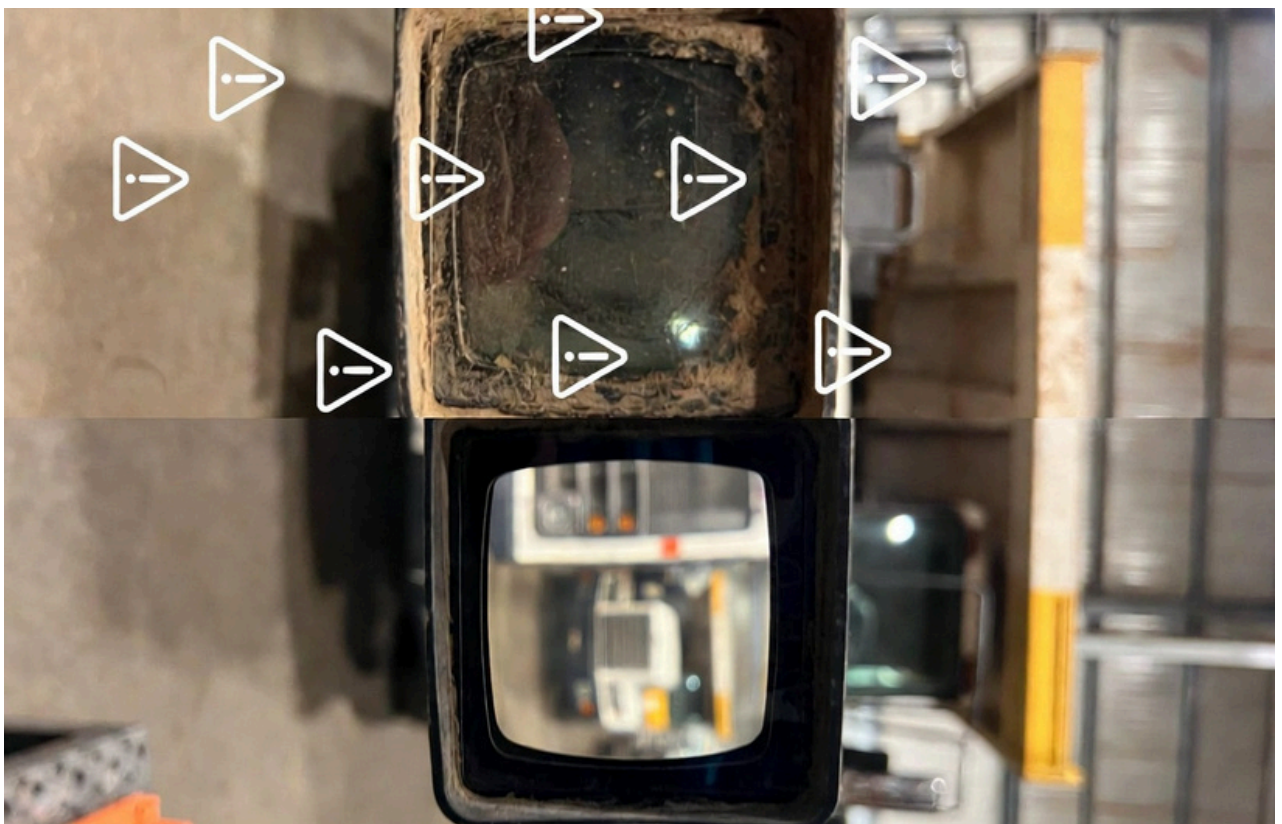
Route the cable neatly along vehicle frame to avoid damage.

Final Testing • Turn ignition ON – system performs self-diagnosis.  
• Engage reverse gear – display should show "888" + single beep.  
• Test detection by placing an object within range.



# Troubleshooting Guide

Problem	Possible Cause	Solution
No display	Power/fuse issue	Check connections and
Constant "-P-" alert	Sensor dirty or obstructed	Clean sensor face immediately
Incorrect distance reading	Wrong sensor angle	Re-adjust mounting angle
No buzzer sound	Buzzer wire loose	Check buzzer connection
Self-diagnosis fails	Sensor or wiring fault	Contact service support



# **Safety Warnings & Maintenance**

## **Safety Warnings**

Do not modify or tamper with the system – will void warranty and compromise safety.  
Test the system daily before starting operations.  
Keep sensor clean – dust can reduce detection accuracy.

## **Maintenance Guidelines**

Clean sensor weekly with soft dry cloth. Inspect wiring monthly for wear or corrosion. Perform full system test every month.

### **For any service or support:**

Contact: +91 8494900615 / 9640127499

Email: [eande.universal@gmail.com](mailto:eande.universal@gmail.com)



Address: NO#36 Seerappa Layout, 2nd  
Cross, Lakshmipura Main Road, Abbigere Industrial  
Area, Abbigere Village, Bengaluru-560090. Company:  
Universal Electrical & Electronics Website:  
[www.ueeindia.com](http://www.ueeindia.com) Mobile: +91 8494900615.  
/9640127499  
Email: [eande.universal@gmail.com](mailto:eande.universal@gmail.com)